

# Campaign for a New Beginning

## Recognition Opportunities



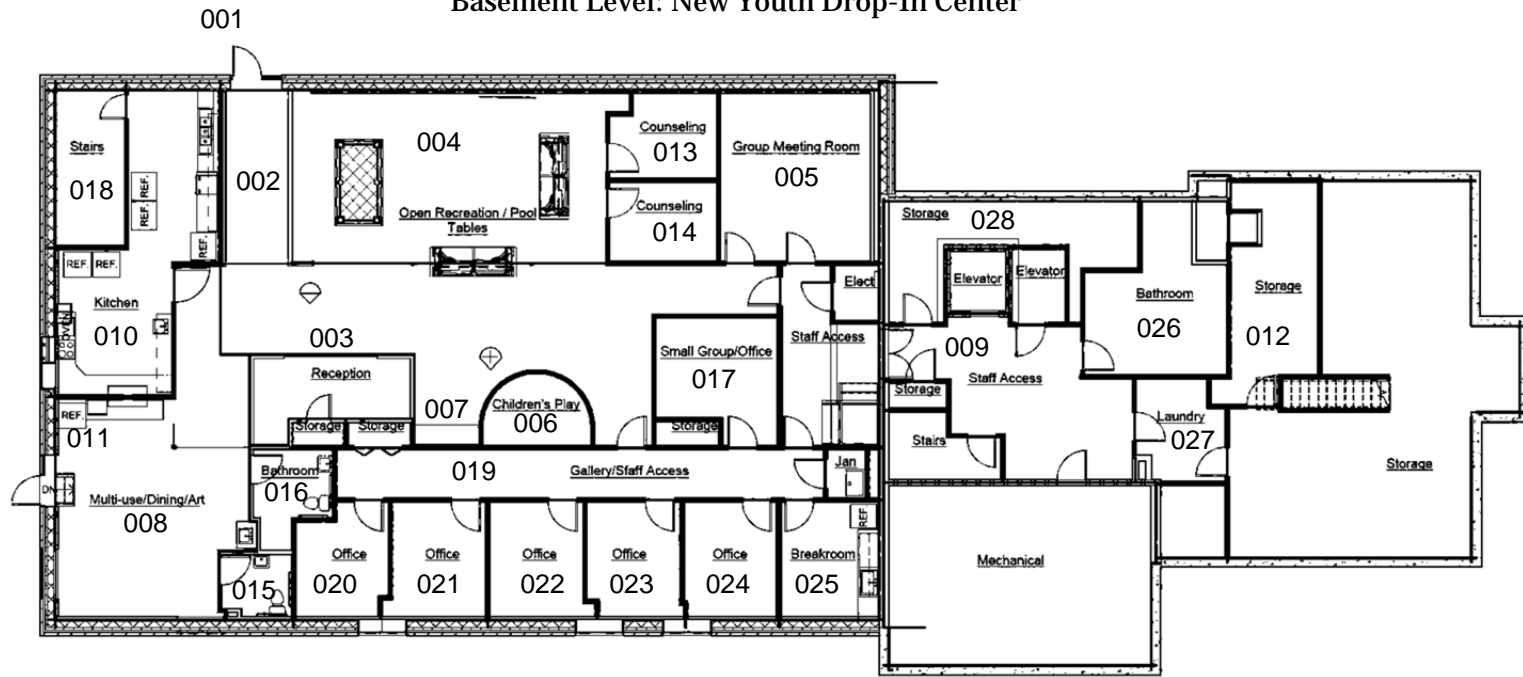
Your gift to the CAMPAIGN FOR A NEW BEGINNING provides a public statement of your support for New Beginnings and homeless youth.

New Beginnings will permanently recognize all campaign donors on a display inside the building, in grateful appreciation for their generous support.

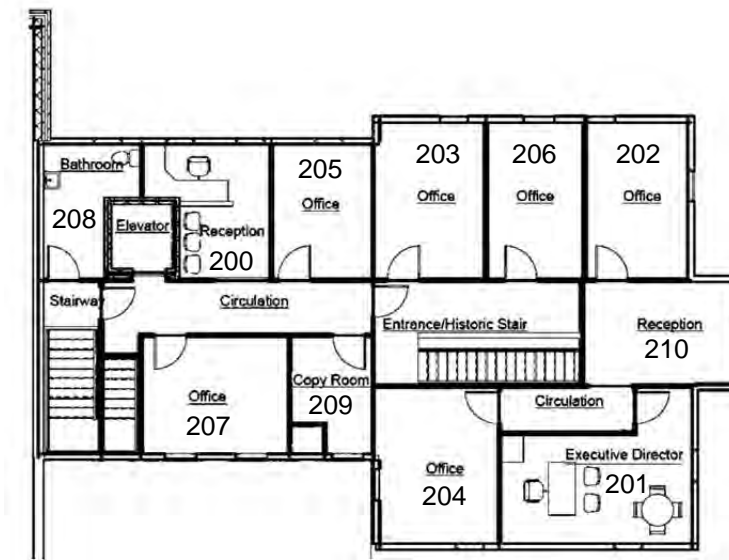
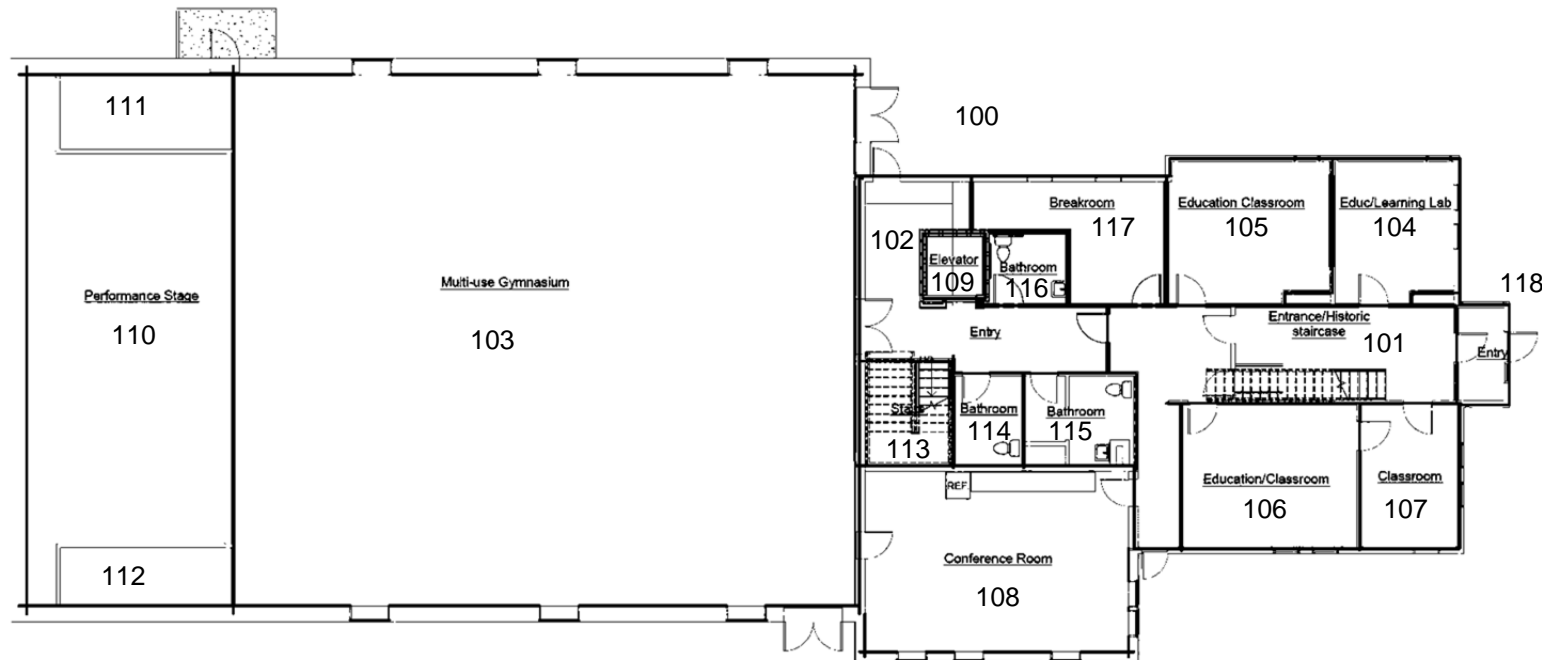
Named Gift plaques will be installed to recognize the naming of the areas which a donor has selected.

Thank you for your commitment to the vulnerable youth of Maine.

Basement Level: New Youth Drop-In Center



First Floor: Education & Community Use



Second Floor: Administration

**Campaign Gift Recognition – New Beginnings Community Center**

#*	Area/Description	Gift level	#*	Area/Description	Gift level
<b>Building</b>		<b>\$150,000</b>	FIRST FLOOR		
			100	Entry Garden/Landscaping	\$12,000
			101	Historic Staircase/Front Entry	\$20,000
			102	Entrance & Elevator Lobby	\$20,000
			103	Multi-use Gymnasium	\$50,000
			104	Education/Learning Lab	\$13,500
			105-07	Education/Classrooms	\$10,000
			108	Conference Room & Kitchenette	\$10,000
			109	Elevator	\$25,000
			110	Performance Stage	\$25,000
			111-12	Backstage/Stairwells	\$1,200
			113	Main Stairwell	\$2,500
			114-16	Restrooms	\$900
			117	Staff Break Room	\$1,500
			118	Front Garden/Landscaping	\$9,000
			SECOND FLOOR		
			200-10	Admin Lobby & Reception	\$6,000
			201	Executive Director Office	\$10,000
			202	Development Director Office	\$3,000
			203	Finance Director Office	\$3,000
			204	Community Svc. Director Office	\$3,000
			205	Accountant Office	\$3,000
			206-07	Admin Office/Meeting	\$3,000
			208	Staff Restroom	\$750
			209	Office/Copier Area	\$1,200
001	Lower Garden/Landscaping	\$5,000			
002	Drop-In Entrance Gallery	\$12,000			
003	Drop-In Lobby & Reception	\$10,000			
004	Open Recreation/Pool Tables	\$7,500			
005	Group/Quiet Meeting Room	\$9,000			
006	Toddler Play Area	\$5,000			
007	Youth Phone & Media Area	\$2,500			
008	Multi-use Dining & Art Room	\$10,000			
009	Hallway/Elevator access	\$1,200			
010	Commercial Grade Kitchen	\$15,000			
011	Youth Food/Kitchenette Area	\$1,500			
012	Secure File Storage	\$900			
013-14	Private Counseling	\$5,000			
015-16	Youth Restrooms	\$900			
017	Small Group/Flex Office	\$5,000			
018	Stairwell to Stage above	\$900			
019	Gallery/Staff Office access	\$3,000			
020-24	Staff Offices	\$1,500			
025	Staff Break/Kitchenette	\$1,500			
026	Staff Restroom	\$750			
027	Laundry	\$1,500			
028	Youth "Store"/Donations	\$5,000			

\*Based on plans available at time of publication