

New Beginnings News



WWW.NEWBEGINMAINE.ORG • 436 MAIN ST. LEWISTON, ME 04240 • 207-795-4077

Winter 2013

From Foster Care to College Dean's List

SAVE THE DATE:

New Beginnings' 2013 Annual Meeting

5:30 pm, Thursday
April 25, 2013



The Board of Directors will host members, staff, and supporters to celebrate our work together. Please call 795-4077 for details.

Inside this Issue

SPOTLIGHT ON:

YOUTH

Dean's List 1-2

GOOD SHEPHERD

Challenge Grant 1

PROGRAMS

Host Homes 2

VOLUNTEER

Kurk Lalemand 3

AGENCY

News Briefs 3

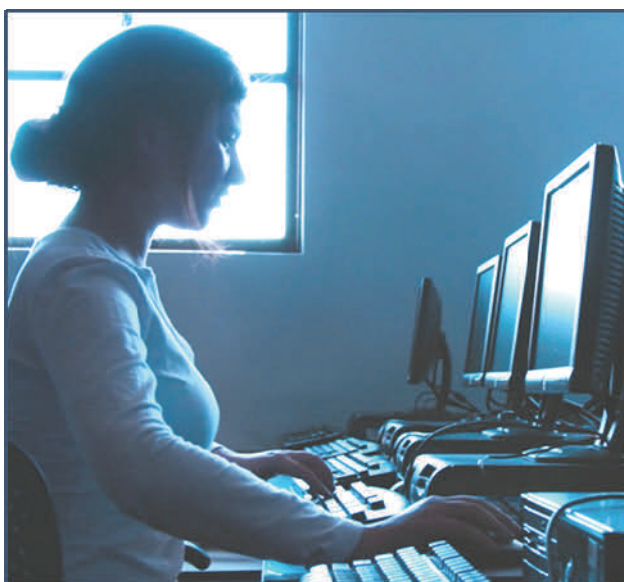
CAN YOU HELP?

Wish List 4

With a 3.6 college grade point average, Lisa* isn't what most people imagine when they think of a homeless youth. But then, Lisa has always had a determination beyond her years. At age 21, she has her own car,

a stable place to live, and plans to graduate from Central Maine Community College (CMCC) this summer with a Phi Theta Kappa honor society braid on her shoulders – and she worked hard to get here.

**Youth's name changed to protect confidentiality*



“Growing up, my mom had a lot of problems,” Lisa says. At 9 years old, she and her siblings were split up into foster care homes. Eventually she was placed with a relative who was more stable. Although she was moved around a lot, Lisa says she was always a good student who “focused on school rather than the other hard things in my life.”

When she was 18, Lisa had to leave her relative's home because there wasn't enough room. Barely an adult, she was on her own, staying with friends and trying not to become a homeless statistic.

Lisa decided to start college right after high school, despite not having a stable place to live.

continued on page 2

Fill our Pantry through the Challenge Grant!

The [Good Shepherd Food Bank](#) has awarded New Beginnings a 2013 Challenge Grant. Good Shepherd will match every dollar we raise by May (up to the grant total), which doubles our buying power at the

Food Bank. Our programs typically budget less than 70¢ per person per meal, so the Food Bank makes serving youth 15,000 meals a year possible. Please consider giving to the Challenge Grant – just

\$25 will purchase food at the Food Bank with a retail value of \$400! Make a secure online donation via credit card today at [newbeginmaine.org](#) and include “Food Challenge Grant” in the note field. Our pantry thanks you!

Help us find Host Homes in Andro. County



The New Beginnings Host Home Program is now looking for individuals, couples, or families in Androscoggin County to provide short term (7-21 day) shelter for teens in your own private home.

This program was originally developed for York and Cumberland Counties and has expanded due to a need for short

term care for youth in Androscoggin County and surrounding areas.

A host home provides an alternative to staying at a shelter, on the streets, in correctional facilities, or in unsafe places.

The hope is to place youth in homes as close to their own communities as possible so that they remain connected with

their school and natural supports. A host home provides a safe haven for a teen going through a difficult time. Providers work with youth and their families to find or rebuild a stable home.

Host Homes are certified by New Beginnings, which includes an application and interview, background checks, and housing safety & fire inspection. Host Homes are provided with 24 hour support, free ongoing training, a nightly stipend when a teen is housed, transportation reimbursement, and needed supplies—see [info at newbeginmaine.org](http://info.newbeginmaine.org).

Contact Jada Caron at 207-212-2534, 795-4070 or jada@newbeginmaine.org to learn more.



“I wanted a better life than what I saw around me growing up.”

- TLP Youth on the CMCC Dean's List

Dean's List, *continued from page 1*

Lisa's former foster parents encouraged her to pursue her education even though no one in her family had ever gone to college.

Meanwhile, friends connected Lisa with Ernie Gurney, New Beginnings' Outreach worker in Farmington. He helped Lisa get her own apartment for the first time, through the Transitional Living Program (TLP).

While living in Farmington, Lisa juggled a job, homework for 6 classes, and the long commute to Lewiston to attend school at CMCC. Lisa requested to move into a TLP apart-

ment in Lewiston to be closer to school. Once in Lewiston, she began working with case manager Victor Leclerc, “Lisa is independent and knows how to focus on 1 thing at a time – she can concentrate on her goals, knows her boundaries, decides what she wants to do, and goes for it!”

Lisa has been on the Dean's List at CMCC every semester, and will graduate with her Medical Assistant AA degree this summer. After graduation, she hopes to work in a Physical Therapy office while she contemplates her future education and career. Lisa can also apply for a New Beginnings' [Dot Larrabee Fund](#) education scholarship for up to a year after she leaves the TLP.

When asked where her drive to get an education came from she simply says, “I wanted a better life than what I saw around me growing up.”



Agency News Briefs:

Solstice Vigil: Despite the cold wind and rain, a hardy group of 40+ supporters participated in the annual Homeless Memorial Vigil in Lewiston on December 21. Thank you to LAASH, Calvary, Trinity, and all the community members supporting this event.

Holiday Gift Drive: Thanks to over 50 donors, we met our goal to distribute 80 holiday gift bags to youth this year! Special thanks to Sharon Carter, Sue-Ellen Clark, Linda DeSantis, Rebecca Herzig, Central Maine Imaging, Central Maine Eye Care, Cassiel's Salon, and TD Bank for large donations!

Youth Film Project: The Lewiston Youth Advisory Council (LYAC) interviewed Executive Director Bob Rowe and local homeless youth to produce a documentary which premiered at Lewiston City Hall on Jan. 17 to a standing room only crowd, including Gov. LePage! Copies are available from LYAC or New Beginnings; call 795-4077.

State Grants: New Beginnings recently won several competitive State of Maine grants to provide services for homeless youth in our region. In addition to the Lewiston emergency shelter, we received funding for Drop-In in Lewiston and Outreach in Franklin, Androscoggin, and Kennebec Counties. Outreach was awarded the contract for the PATH program for homeless youth with serious mental illness. For info, contact 795-6831 (Outreach) or 795-4070 (Shelter).

Annual Appeal 2012: Thanks to longtime donors and new friends, we were able to reach our \$20,000 goal for the Annual Appeal. Thank you to Northeast Bank, Androscoggin Valley Board of Realtors, and everyone who gave or shared our campaign information; we couldn't have done it without your support!

Volunteer Spotlight: Kurk Lalemand

As past Chair of the Androscoggin Chamber of Commerce and owner of NEXT Level Business Coaching, Kurk Lalemand is a familiar face to many in our community.



Kurk was born in Lewiston, attended Auburn's Edward Little High School, and after travel and service in the military, returned to settle in the L-A area. Kurk read our request in a previous newsletter for cooks to help serve supper to 20-50 young people every Tuesday and Thursday at the downtown Lewiston Outreach Drop-In Center, and he has since been preparing meals there an average of twice a month. When Kurk first contacted us to volunteer,

New Beginnings staff were excited because they knew of him as the founder of NAPPI — a training program used at New Beginnings to teach staff how to assess, prevent, and defuse violent conflicts. Since Kurk began NAPPI ([Non-Abusive Psychological and Physical Intervention](#)) in 1977, it has been used successfully all over the world to train providers in residential, psychiatric, and other high-conflict settings.

When asked what he has enjoyed the most about volunteering here, Kurk did not hesitate to say “the passion and professionalism of the staff members” at Outreach. “I hear their conversations with the youth during my shift, and see how seriously they take their responsibility of helping the youth,” he says, “I’ve been in the field for over 30 years, and I can tell when people have their heart in the right place.”

Thank you to Kurk and all the volunteers that help our programs every year!

“I’ve been in the field ...
I can tell when people have their heart in the right place.”



A Big THANK YOU to the local Donors from our November 2012 SILENT AUCTION:

84 Court Pizza ~ All About You ~ Ava Anderson/Nancy Brown-Mooney
Bath & Body Works ~ Best Buy Blackie's Produce ~ Bush's Bushes
Chopsticks ~ Coast of Maine ~ Dag's Bait & Tackle ~ DaVinci's
Don's Automotive ~ Ella's Chocolates ~ Fire House Grill ~ Fish Bones
Flagship Cinemas ~ Forage Market ~ Gipper's ~ Gritty's ~ Hilton Garden
Huhtamaki/Chinet ~ Kris Lape Designs ~ Lamey Wellehan ~ Landscape
World ~ Little Ridge Farm ~ Mac's Downeast Seafood ~ Margaritas
Narals ~ Orbit Hair ~ Pedro O'Hara's ~ Portland Pirates ~ Rangeley
Saddleback Inn ~ Riverview Ski & Bike ~ Starbucks ~ 99 Restaurant

Special Thanks to host Central Maine Credit Union!



NEW BEGINNINGS, INC.
436 MAIN STREET
LEWISTON, ME 04240

NON-PROFIT ORG.
US POSTAGE
PAID
LEWISTON, ME
PERMIT NO. 80

Help us Go Green!

Save a tree and get this newsletter via email!
 Update your info at www.newbeginmaine.org.
 Click the link [Subscribe to Newsletter](#).



LIVE UNITED



Wish List for Youth:

- ∞ New Apartment Kits (e.g. hamper filled with kitchen, laundry, and cleaning supplies)
- ∞ New Underwear and Socks
- ∞ Wash cloths and Towels
- ∞ New Pillows
- ∞ Diapers and Baby wipes
- ∞ Snow and/or Rain Boots (Adult size)
- ∞ Used Digital Cameras (5MP minimum)

Contact Rachel 795-4077 with questions - [complete list](#) at www.newbeginmaine.org

Can You Help? We need:

- ∞ Tutors for New Educational Support Program
- ∞ Cooks for Shelter & Drop-In Center meals
- ∞ Assist Building Campaign, Fundraising, Social media
- ∞ Host Homes (see below & inside)

Contact Ethan May 795-4076 about volunteering.

Teens in your community are in need of a safe and temporary home.

Learn how you can make a difference.



New Beginnings

For more information call Jada at 795-4070
 or e-mail her at: jada@newbeginmaine.org

